



More than just making a cut ...

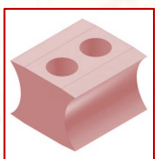
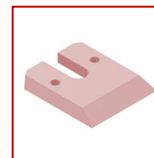
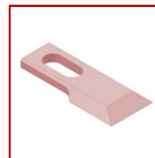


ThermoCut

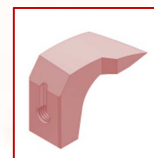
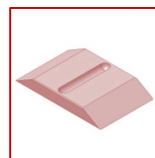
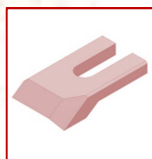
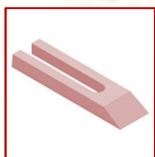
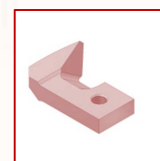


We offer **ThermoCut** style sawmill knives for normal operating conditions, but also specifically for use in dirty wood or in severe climates such as processing very dry or frozen wood. The special heat treatment modifies the hardness, bending strength and fracture resistance for extreme conditions.

Recognizable are our **ThermoCut** by their reddish discoloration!



the Red Ones



Dimensions and prices on demand! Feel free to ask for them!

