



REGENERATION

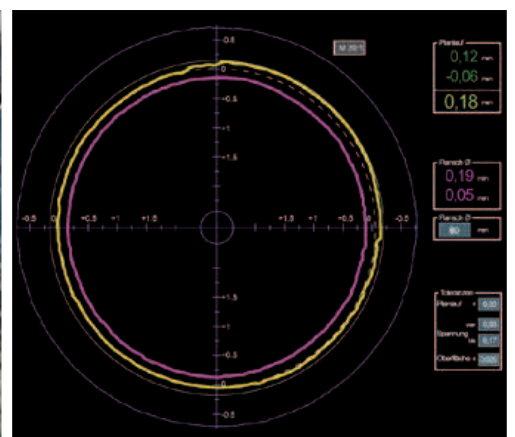
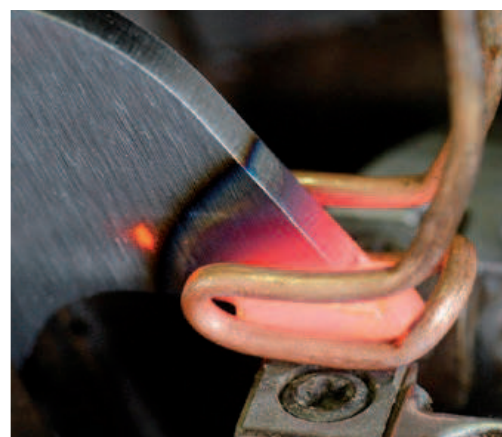
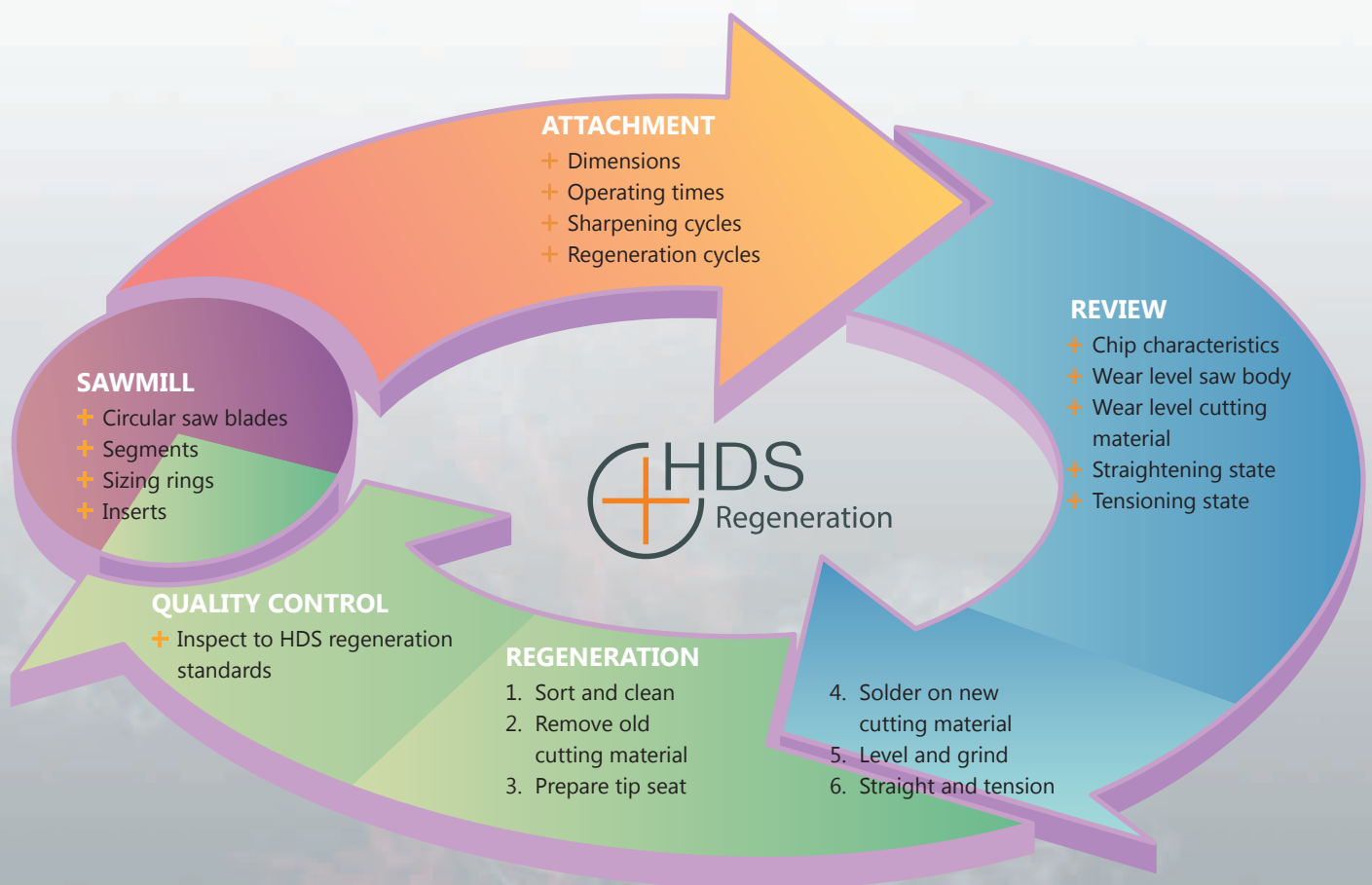
A second life for your used sawmill tools

Used doesn't mean used up, since your sawmill tool can often be repaired or regenerated, which is much more economical compared to a new purchase.

Sawmill tools can be repaired to HDS quality standards straight at our factory. For particularly high quality circular saw blades, segments and sizing rings, usually equipped with a particularly robust "AST Graduated Saw Blade Technology" saw body, complete

regeneration is usually wise and offers great economic benefits. This process can be repeated several times, increasing the life of your sawmill tool by x-fold.

Let us repair or regenerate your sawmill tool. In most cases this will delay a new purchase and we will return your "used ones" like new!



CIRCULAR SAW BLADES